



MIIN EYELASH EXTENSIONS

Authentic Korean Style, Crafted by Koreans.



"Elegance begins with the perfect lashes."
우아함은 완벽한 속눈썹에서 시작됩니다

1. INTRODUCTION
2. ABOUT US
3. EYELASH PRODUCT
4. ACCESSORIES PRODUCT
5. PRIVATE LABEL SERVICE
6. CONTACT



WWW.MIINEYELASH.COM



INTRODUCTION



MIIN Eyelash Extension Company is an original Korean eyelash extension manufacturer, established in 2015 in Ho Chi Minh City, Vietnam. With Korean technology and skilled Vietnamese craftsmanship, we have grown into a trusted exporter to Japan, Korea, the United States, and Europe.

By combining direct manufacturing, premium imported materials from Korea, and advanced production standards, MIIN delivers high-quality products at competitive prices — helping elevate and enhance your eyelash extension business.

OUR MISSION:

- To enhance women's beauty with long-lasting, premium eyelash extensions offered at competitive prices.

OUR VALUES:

- For Customers: To build a trusted brand known for superior quality and strong reputation.
- For Staff: To foster a dynamic, creative, and forward-thinking working environment.

OUR VISION:

- Within 1 year, MIIN will become a widely recognized brand in the eyelash extension market.
- Within 3 years, MIIN aims to rank among the Top 20 high-quality eyelash extension brands.
- Within 5 years, MIIN Eyelash Extension Company will expand into the premium cosmetics segment globally.



MIIN
EYELASH

CURL CHART

Thickness 0.25mm

Color	5mm	6mm	7mm	8mm	9mm	10mm	11mm	12mm	13mm	14mm	15mm	16mm	17mm	18mm
Red														
Orange														
Yellow														
Green														
Light Green														
Light Blue														
Light Purple														
Light Pink														
Light Yellow														

Thickness 0.25mm

Color	6mm	7mm	8mm	9mm	10mm	11mm	12mm	13mm	14mm	15mm	16mm			
Light Blue														
Light Green														
Light Yellow														
Light Purple														
Light Pink														
Light Blue														
Light Green														
Light Yellow														
Light Purple														
Light Pink														
Light Blue														
Light Green														
Light Yellow														
Light Purple														
Light Pink														

CURL CHART



B C CC D DD

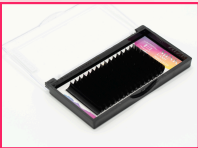


J L LC LD M

Stable Curl for Over 5 Months



PRODUCTS



MINK LASH

- Ultra-lightweight and comfortable
- Natural appearance
- High flexibility
- Premium quality material

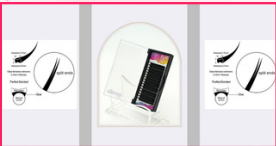


SILK LASH

- Lightweight & Comfortable
- Easy for Lash Artists
- Flexible & Durable
- Suitable for Many Styles



MINK - SILK MATERIAL



FLAT LASH

- Lighter Weight,
- Better Retention
- Fuller Look
- Comfortable Wear

PRODUCTS



COLOR LASH

- Vibrant and Long-Lasting Colors
- Soft and Lightweight Material
- Perfect Curl and Stability
- Creative Styling Options

LOOSE FANS



500 - 1000

- Time-Saving Application

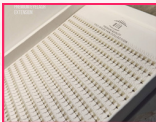


4000

- Consistent Fan Quality

PRE MADE FANS

- Lightweight & Comfortable
- Natural & Full Volume Look
- 16 - 20 - 40 lines



PRODUCTS



GLUE 0,5 S

Dries in just 0.5 seconds, helping lash artists work faster and increase appointment efficiency

GLUE 1 S

Provides excellent bonding strength, helping lash extensions last longer.



GLUE 1,5 S

Easy to control, allowing precise application without clumping



ODM FOR GLUE

With orders of 50 bottles or more, you can choose your preferred bottle and cap design.

Bottle



Cap



Containers of Glue.



Select a metal cap or gold red blue silver brown black

When metal cap is selected, \$ 0.5 is added to the basic unit price.

Premium Cap





RAW

MATERIALS



PRIVATE LABEL

DESIGN TEMPLATE EXAMPLE
CUSTOMIZED



YOUR DESIGN

Signle, mix, line trayst, Choose the lines you would like,
We provide 6 lines, 12 lines, 16 lines, 20 lines in one box



**Your
design**

**EYELASH
EXTENSION**

OEM & ODM



Color lash
Label demo



COLOR BOX



PAPER BOX



OEM PRODUCTS

PRIVATE LABEL

MIIN Eyelash Company is sustainably reliable provider to some of the world's know eyelash extension companies, trusted private label companies.

With an illustrious, experiences team of eyelash extension experts, MIIN Company (manufacturer of MOLLE Eyelash Extension) has been able to create supreme eyelashes solutions. Our company has been going concern in:

- Applying research of the high tech equipment to ensure the best quality productions.
- Using selective ingredients.
- Research and develop the becoming products with clients ranging to offer them not only the best products but also the business solution.
- Large warehousing, to provide accurate orders and to be punctually deliver-ing and shipping

MIIN Eyelash Extensions Company is very flexible in working with clients to reach their needs and satisfaction. From formulation to production to final packaging, our duty is to support your company from beginning to finishing.

MIIN IN THE WORLD



CONTACT

MIIN EYELASH COMPANY
HO CHI MINH CITY - VIETNAM



- **Trancy: +84 813 752 266 (WhatsApp-Viber-Zalo)**
- **Email: hasegawasalemiineyesh@gmail.com**
- **Website: www.miineyesh.com**